

Lifting System Components



Tel: 01245 248514

Fax: 0872 1114567

email: sales@cscommercialproducts.co.uk

Website: www.cscommercialproducts.co.uk

CS10-122

OEM Ref Nr 1903-106

**3x4 Lifting Chain
(Standard)****CS10-123**

OEM Ref Nr SP0054/3

3x4 Chain Pin**CS10-152**

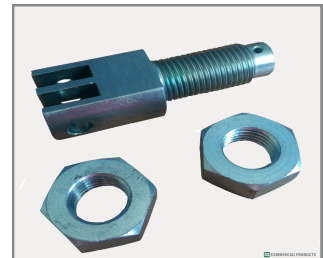
OEM Ref Nr 1903-108

**4x4 Lift Chain
(Heavy Duty)****CS10-153**

OEM Ref Nr SP1938/2

4x4 Chain Pin**CS10-139**





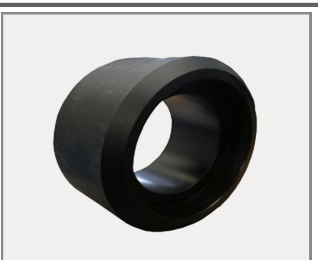

OEM Ref Nr SP0054/2

**3x4 Chain Anchor
(c/w 2 Nuts)****CS10-138**

OEM Ref Nr SP2704

Single Yoke Assembly

Tel: 01245 248514
Fax: 0872 1114567
email: sales@cscommercialproducts.co.uk
Website: www.cscommercialproducts.co.uk

<p>CS10-012</p> <p>Nylon Slide Block (254 x 50 x 86.5mm)</p>	<p>OEM Ref Nr 1901-020</p>	
<p>CS39-084</p> <p>Pawl/Hammer Spring L/H</p>	<p>OEM Ref Nr 1640-002</p>	
<p>CS39-084-01</p> <p>Pawl/Hammer Spring R/H</p>	<p>OEM Ref Nr 1640-003</p>	
<p>CS10-015</p> <p>Nylon Bush (Top Deck Front)</p>	<p>OEM Ref Nr SP0005/5</p>	
<p>CS10-016</p> <p>Nylon Roller (Top Deck Rear)</p>	<p>OEM Ref Nr SP0137</p>	
<p>CS10-014</p> <p>Nylon Roller (Whale Deck)</p>	<p>OEM Ref Nr NY1008</p>	

Tel: 01245 248514

Fax: 0872 1114567

email: sales@cscommercialproducts.co.uk

Website: www.cscommercialproducts.co.uk

Part No	Description	OEM Ref	Other Ref	Page No
CS10-012	Nylon Slide Block	1901-020		8-2
CS10-014	Nylon Roller (Whale Deck)	NY1008		8-2
CS10-015	Nylon Bush (Top Deck Front)	SP0005/5		8-2
CS10-016	Nylon Roller (Top Deck Front)	SP0137		8-2
CS10-122	3x4 Lifting Chain (Standard)	1903-106		8-1
CS10-123	3x4 Chain Pin c/w Split Pins	SP0054/3		8-1
CS10-138	Single Yoke Assembly	SP2704		8-1
CS10-139	3x4 Chain Anchor c/w 2 Nuts	SP0054/2		8-1
CS10-152	4x4 Lifting Chain (Heavy Duty)	1903-108		8-1
CS10-153	4x4 Chain Pin	SP1938/2		8-1
CS39-084	Pawl/Hammer Spring L/H	1640-002		8-2
CS39-084-01	Pawl/Hammer Spring R/H	1640-003		8-2